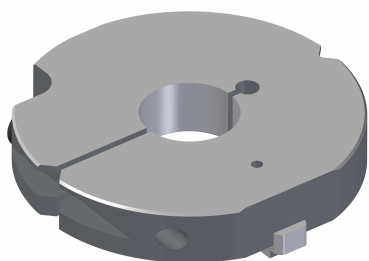
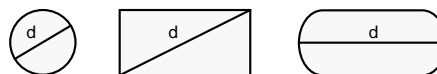
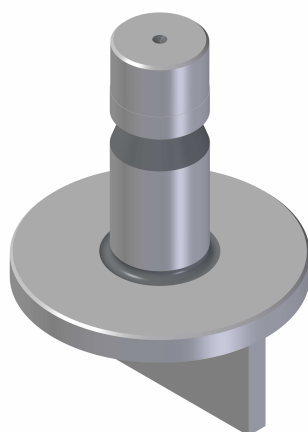




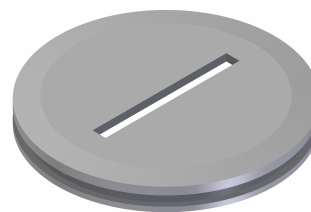
Gr. 2 - d. max 77



← ①

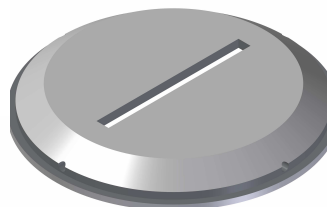


← ②

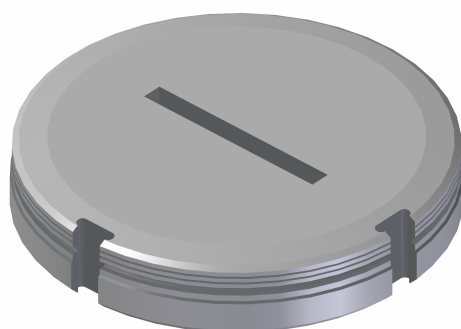


← ③

SELEZIONARE IL MODELLO IDONEO IN BASE AL TIPO DI MACCHINA
Choose the model according to machine type



← ④



← ⑤

Ref.	Cod.	Descrizione / Description
1	702	ANELLO DI CENTRAGGIO Centering rings
2	247	PUNZONE < Ø40 / Punch < Ø40 PUNZONE < Ø50 / Punch < Ø50 PUNZONE < Ø60 / Punch < Ø60 PUNZONE < Ø72 / Punch < Ø72 PUNZONE < Ø77 / Punch < Ø77

Ref.	Cod.	Descrizione / Description
3	601	PREMILAMIERA Stripper plate
4	603	PREMILAMIERA Stripper plate
5	373	MATRICE Die

NOTE TECNICHE:

- Punzoni in acciaio HSS
- Sedi delle chiavette sulle matrici sagomate con fondo raggato per eliminare possibili inizi di cricature

Su richiesta :

- Punzoni in acciaio SSK per lavorazioni gravose
- Rivestimenti TIN – TIALN
- Estrattore in uretano

Technical notes:

- Hardened HSS punches
- Keyways on the shaped dies with rayed bottom in order to avoid initial cracking

On request :

- Special SSK punches for heavy workings
- TIN –TIALN coatings
- Urethane stripper

UTENSILI PER MACCHINE TRUMPF – Tools for Trumpf machines

