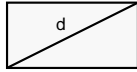
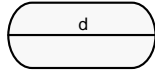


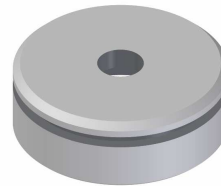
MTE 6 - d. max 24



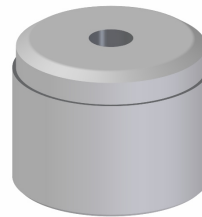
Ref.	Cod.	Descrizione / Description
1	923	PUNZONE Punch
2	E23	DISCO ESTRATTORE Stripper plate
3	423	MATRICE Die



← ①



← ②



← ③

NOTE TECNICHE:

- Punzoni in acciaio HSS temprati con doppio rinvenimento
- Matrici antisfrido secondo richiesta

Su richiesta :

- Punzoni in acciaio SSK per lavorazioni gravose
- Rivestimenti TIN – TIALN

Technical notes:

- Hardened HSS punches with double tempering
- Anti-scrap dies as per request

On request :

- Special SSK punches for heavy workings
- TIN –TIALN coatings