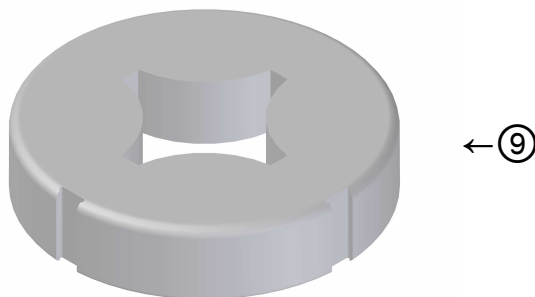
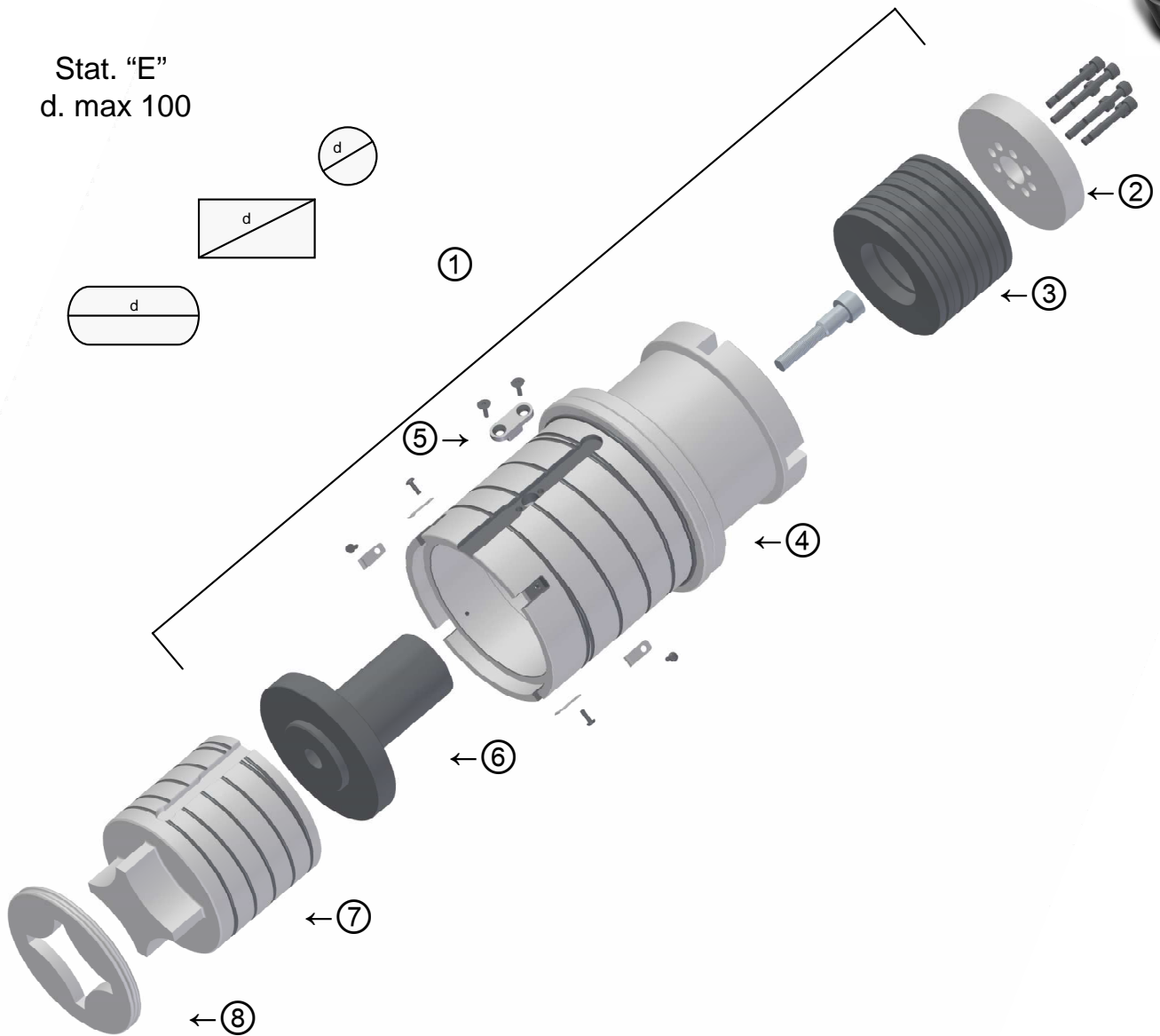




Stat. "E"
d. max 100



Ref.	Cod.	DESCRIZIONE / Description
1	9015R	GRUPPO PREASSEMBLATO (senza punzone e disco estraattore) Set ass'y (without punch and stripper plate)
2	BM15R	BATTIMAZZA Punch head
3	MA15R	MOLLE A TAZZA Cone disk springs
4	G15R	GUIDA Punch guide
5	CH05	CHIAVETTA Key
6	CD15R	CODOLO Spigot
7	915	PUNZONE Punch
8	E15	DISCO ESTRATTORE Stripper plate
9	415	MATRICE Die





Note tecniche:

- Guide temprate e rinvenute
- Matrici antisfrido secondo richiesta , riferimenti standard 0°\ 90° - 0°\ 135°
- Sedi delle chiavette sulle matrici con fondo raggiato per eliminare possibili inizi di cricature
- Punzoni in acciaio HSS.

Su richiesta :

- Punzoni in acciaio SSK per lavorazioni gravose
- Rivestimenti TIN - TIALN

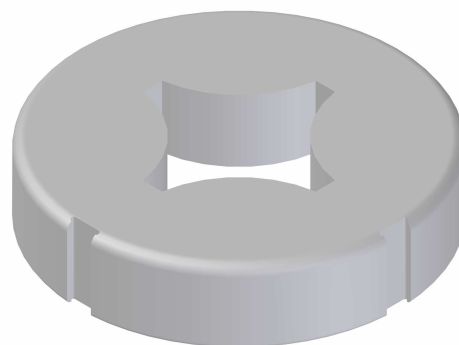


Stat. "E" - GRUPPO ROTANTE

Rotating unit

Art. 9015R - 415

Ø max 100



Technical notes:

- Hardened, tempered guides
- Anti-scrap dies as per request, standard references 0°\90° - 0°\135°
- Keyways on the dies with rayed bottom in order to avoid initial cracking.
- HSS punches.

On request :

- Special SSK punches for heavy workings
- TIN -TIALN coatings

