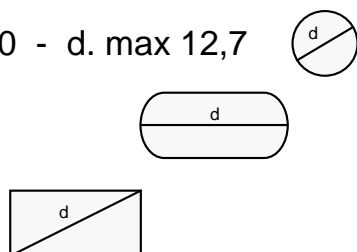




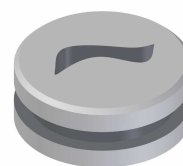
XMTE 10 - d. max 12,7



Ref.	Cod.	Descrizione / Description
1	9233	PUNZONE Punch
2	E233	DISCO ESTRATTORE Stripper plate
3	4233	MATRICE Die



← ①



← ②



← ③

**NOTE TECNICHE:**

- Punzoni in acciaio HSS temprati con doppio rinvenimento
- Matrici antisfrido secondo richiesta

**Su richiesta :**

- Punzoni in acciaio SSK per lavorazioni gravose
- Rivestimenti TIN – TIALN

**Technical notes:**

- Hardened HSS punches with double tempering
- Anti-scrap dies as per request

**On request :**

- Special SSK punches for heavy workings
- TIN –TIALN coatings

